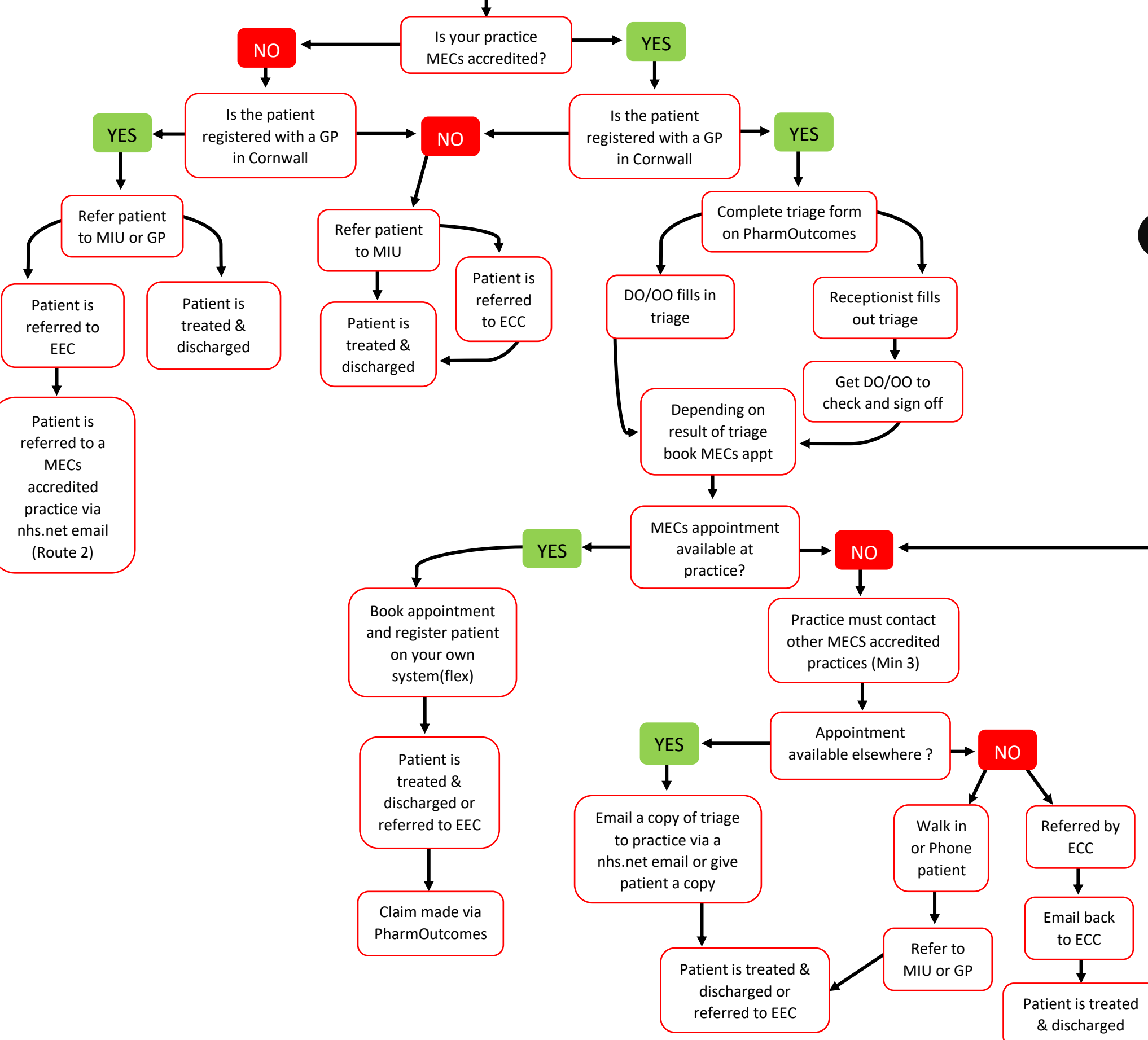


# MECs Pathway

**NON ACCREDITED PRACTICES**  
 PLEASE **DO NOT** SEND ANY PATIENTS DIRECTLY TO EEC OR A MECS ACCREDITED PRACTICE!  
 PLEASE FOLLOW THE PATHWAYS.

**1** Patient presents practice or phones with a Minor Eye Condition



**2** Referral received from Emergency Eye Casualty (EEC)

